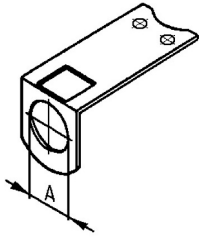
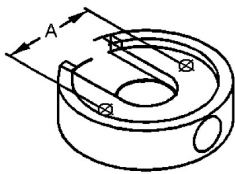
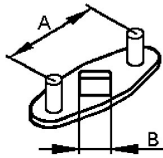


**Spare parts – Butterfly valves / Food technique, Chemical technique**
**Art.No**
**EUR**
**Art.No**
**EUR**
**Holding device reinforced for inductive switch, actuator**


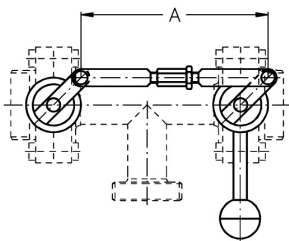
DN	A							AISI304	
25-100 (1"-4")	12,3							517133	8,10
25-100 (1"-4")	18,3							517233	8,10
125-200	12,3							517141	13,20
125-200	18,3							517241	13,20

**Switch cams, reinforced, actuator**


DN	A							Plastic	
25-100 (1"-4")	35							517333	12,90
125-200	42							517341	39,80

**Position indicator, reinforced, actuator**


DN	A	B						AISI304	
25-100 (1"-4")	35	9,5						517433	7,10
125-200	42	14						517441	11,90

**Action switch LR with handle for T-butterfly valve**


DN	A							AISI304	
25	140							512833	Enquiry
32	152							512834	Enquiry
40	170							512835	Enquiry
50	190							512836	Enquiry
65	210							512837	Enquiry
80	240							512838	Enquiry
100	264							512839	Enquiry

**LINNEMANN**  
 Rohrverbindungen • Edelstahlarmaturen  
 Pipe connections • Stainless steel fittings

 LINNEMANN GmbH • Heerweg 14-16  
 72070 Tübingen / Germany

 Fon: +49 (0) 7071 97555-0  
 Fax: +49 (0) 7071 97555-10

 E-Mail: info@linnemann-online.com  
 Internet: www.linnemann-online.com